



Deborah Sheely

Deputy Administrator
Competitive Programs Unit

National Institute of Food and Agriculture
(NIFA)



National Institute of Food and Agriculture

Established in the 2008 Farm Bill

All CSREES authorities transferred to NIFA
on October 1, 2009

Official launch on October 8, 2009

Dr. Roger Beachy, Director



NIFA Integration

Research: to develop the knowledge needed to address national challenges

Education: to strengthen schools and universities to train the next generation of scientists, educators, producers, and citizens

Extension: to bring knowledge gained through research to the people who need it most

NIFA Integration

Focus

Scale

Impact



NIFA Integration

Focus

Global food security and hunger

Climate change

Sustainable bioenergy

Nutrition/childhood obesity

Food safety



NIFA Integration

Scale

NIFA will enable projects at an appropriate scale to facilitate scientific breakthroughs



NIFA Integration

Impact

NIFA will support research, education, and extension with a focus on tangible and meaningful outcomes



Proposed NIFA Structure

Institute of Food Production and Sustainability

Institute of Bioenergy, Climate, and Energy

Institute of Food Safety and Nutrition

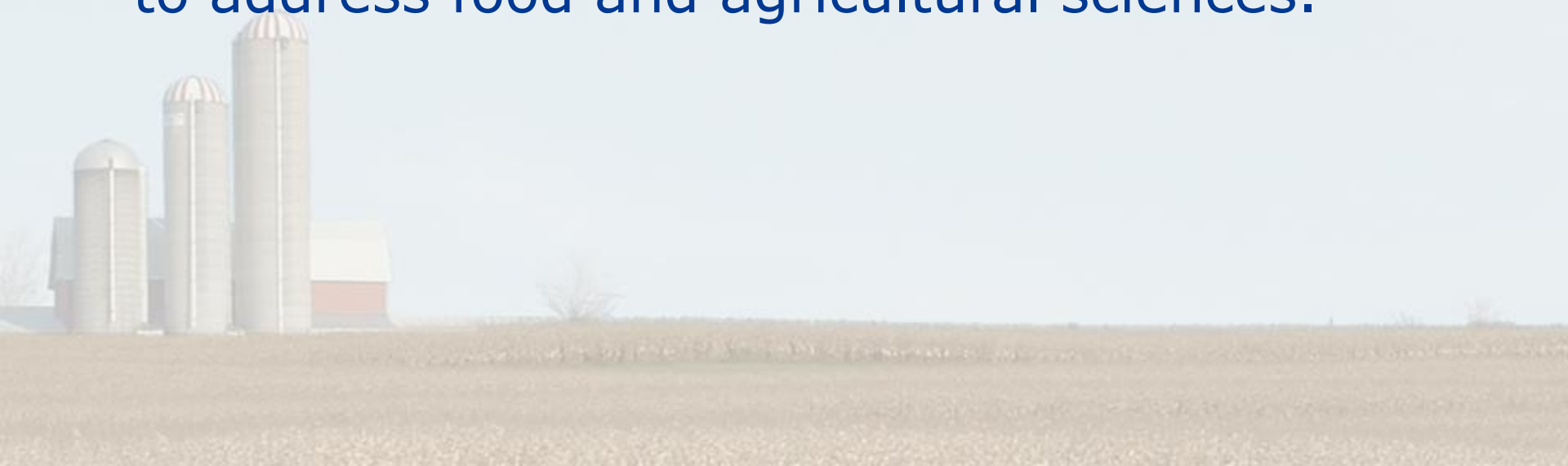
Institute of Youth, Family, and Communities



Agriculture and Food Research Initiative

Authorized in Section 7406 of the Food, Conservation, and Energy Act of 2008 (*i.e.*, the 2008 Farm Bill)

AFRI provides funding for fundamental and applied research, extension, and education to address food and agricultural sciences.



Agriculture and Food Research Initiative



Authorized for appropriation of \$700 million for each of fiscal years 2008 through 2012

No less than 30% will be made available for integrated programs

Indirect costs capped at 22%



Agriculture and Food Research Initiative

Of funds allocated for research:

No less than 40% made available for applied research

No less than 60% made available for fundamental research

No less than 30% for multi-disciplinary teams

No more than 2% for equipment grants

Agriculture and Food Research Initiative

Two different eligibilities provided in the Farm
Bill:

“AFRI eligibility” for non-integrated programs

“Section 406 eligibility” for integrated programs



Non-Integrated Eligibility



Eligible Institutions

State agricultural experiment stations, colleges and universities, university research foundations, other research institutions and organizations, Federal agencies, national laboratories, private organizations or corporations, individuals, and any group consisting of two or more of the preceding entities



Integrated Eligibility



Eligible Institutions

Colleges and universities, University research foundations, 1994 Land-Grant Universities, and Hispanic-serving agricultural colleges and universities



Agriculture and Food Research Initiative

A field of sunflowers in bloom, with bright yellow petals and dark brown centers, set against a clear blue sky.

Single Function: Research, Education, or
Extension Grants

Multi-functional: Integrated Research,
Education, and Extension Project Grants

Conference Grants

Food and Agricultural Science Enhancement
(FASE) Grants – *restricted eligibility*

Coordinated Agricultural Project (CAP) Grants

A background image of a farm with several tall, cylindrical silos and a barn, set against a clear sky. The foreground is a field of golden-brown crops, likely corn.

Focus:

Global Food Security

Climate Change

Sustainable Bioenergy

Nutrition/Childhood Obesity

Food Safety



Scale:

Grants will be significantly larger than in the past to facilitate scientific breakthroughs and the transfer of knowledge



Impact:

Increased focus on clear, measurable outcomes with an emphasis on solving problems

Significant educational opportunities

Effective extension/outreach

Other Priority Areas:

Plant Health and Production and Plant Products

Animal Health and Production and Animal Products

Food Safety, Nutrition, and Health

Other Priority Areas:

Renewable Energy, Natural Resources, and Environment

Agriculture Systems and Technology

Agriculture Economics and Rural Communities



Applying to NIFA

All proposals must be submitted via
[Grants.gov](https://www.Grants.gov)

Submit well before the deadline to allow
for time to correct problems

Make sure to follow all application
guidelines; attachments in PDF

Call the National Program Leader with
questions related to specific programs

Get Involved

Volunteer to serve on a peer review panel

Contact the National Program Leader to express interest

Send a current CV

Volunteer to serve as an *ad hoc* reviewer

Submit an application

For More Information

NIFA website: www.nifa.usda.gov

Contact me:

Deborah Sheely, Ph.D.

Deputy Administrator

Competitive Programs Unit

(202) 401-5024

dsheely@nifa.usda.gov